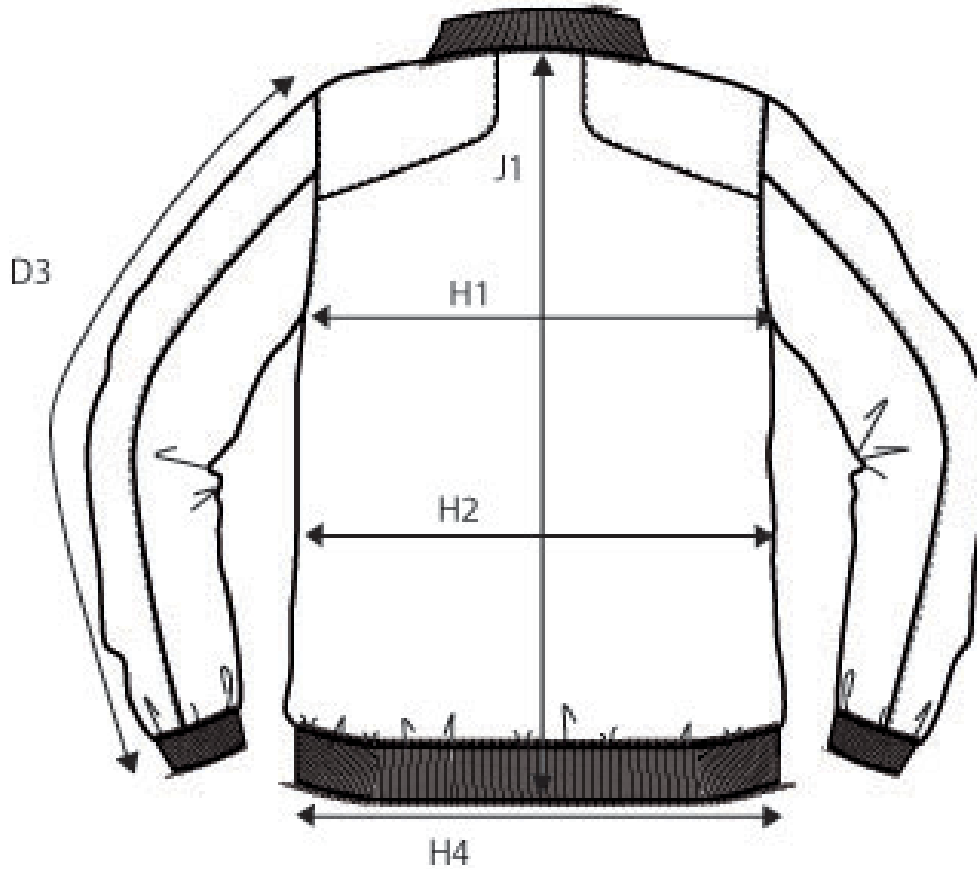


SIZE AND FIT: BUSHWICK



BUSHWICK Mens only

Base size: M / Measurement (in cm)	Diagram	S	M	L	XL	XXL	3XL	4XL
SLEEVE LENGTH - from shoulderseam	D3	66,25	68	69,75	71,5	73,25	75	76,75
1/2 CHEST WIDTH at armhole	H1	56,5	59,5	62,5	65,5	68,5	71,5	74,5
1/2 WAIST	H2	54	57	60	63	66	69	72
1/2 BOTTOM WIDTH	H4	52,5	55,5	58,5	61,5	64,5	67,5	70,5
FULL LENGTH at centre back	J1	67	70	73	76	79	82	85